



# FORCE II

Installation Instructions  
**817437**  
2007-13 JEEP WRANGLER JK  
3.6L, 3.8L V6 ENGINE  
2 & 4 Wheel Drive

## OVERVIEW:

1. Take a moment to read and understand these instructions before installing your Flowmaster performance system.

**NOTE:** Please inventory all parts now before continuing and if necessary, report any missing items to our tech line. This will avoid potentially stranding your vehicle until any missing replacement parts arrive.

| ITM # | PART #     | DESCRIPTION                | QTY. |
|-------|------------|----------------------------|------|
| 1     | 852558-189 | Muffler                    | 1    |
| 2     | 16596S     | Tailpipe Assembly          | 1    |
| N/A   | PK492      | Hardware Package includes: | 1    |
| 3     | MC250BS    | Stainless Band Clamp       | 2    |
| 4     | HW502      | 7/16" Hanger Keepers       | 1    |

## REMOVE STOCK EXHAUST SYSTEM:

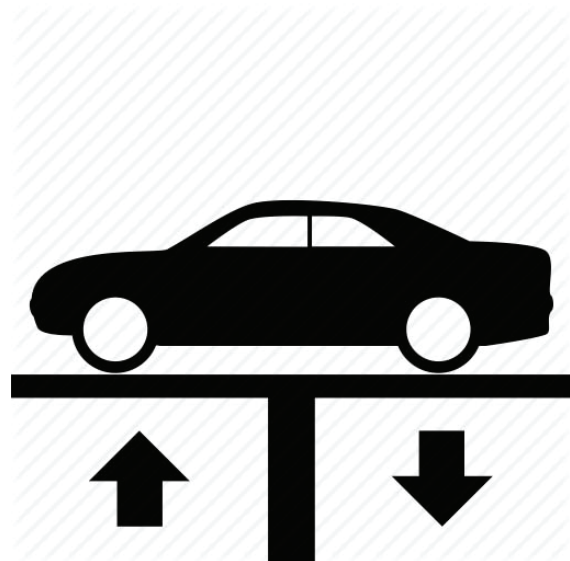
2. Raise vehicle up on a hoist or rack to working height. If you don't have access to a hoist or rack, support vehicle with jack stands.

### WARNING:

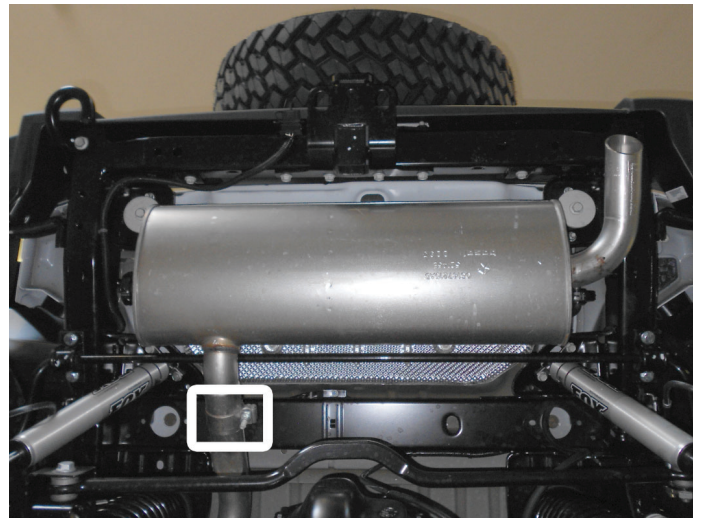
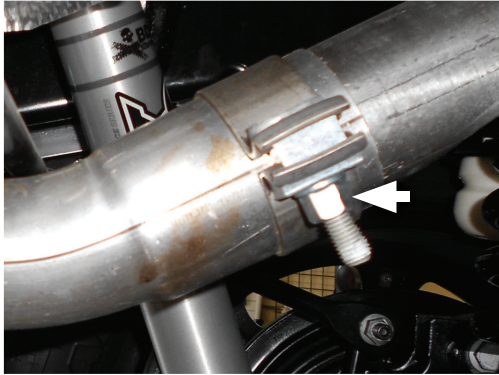
Avoid serious burns! Allow your vehicle time to cool completely before touching any factory engine components.

### To ease preparation and installation of your new kit:

- Apply penetrating lubricant to mounts, bolts and clamps before you remove them.
- Use stands as necessary to support parts as you detach them from your vehicle and again as you install new parts.



3. Loosen band clamp on muffler inlet (left side). Support muffler assembly, separate wire hangers from isolators then remove muffler from vehicle.



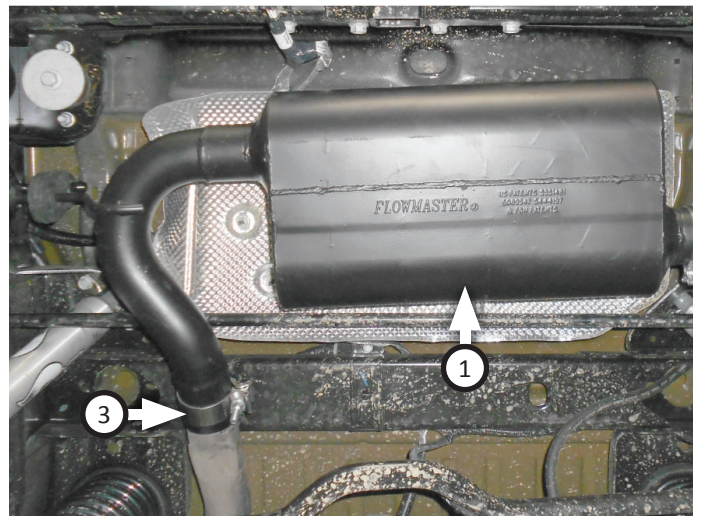
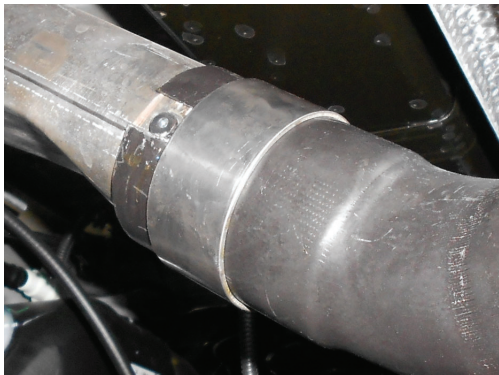
### INSTALL FLOWMASTER EXHAUST SYSTEM:

4. Remove nuts from stock and Flowmaster clamps, apply anti-seize compound to bolts and re-install nuts.

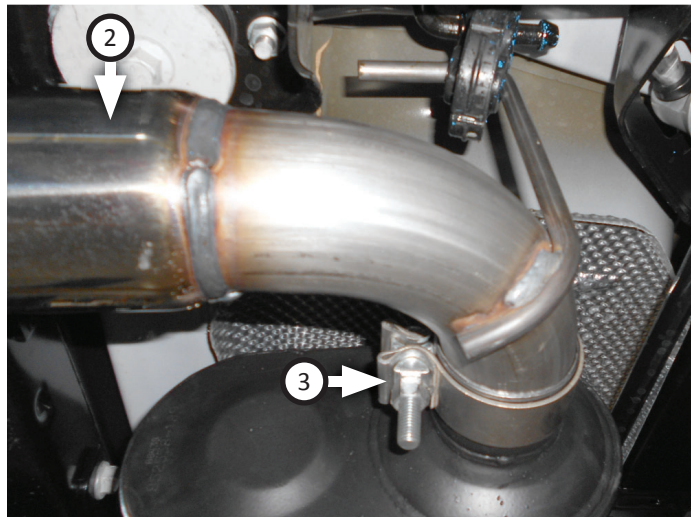
**NOTE:** The image in this step is intended for illustrative purposes only and may or may not accurately reflect components included in your kit.



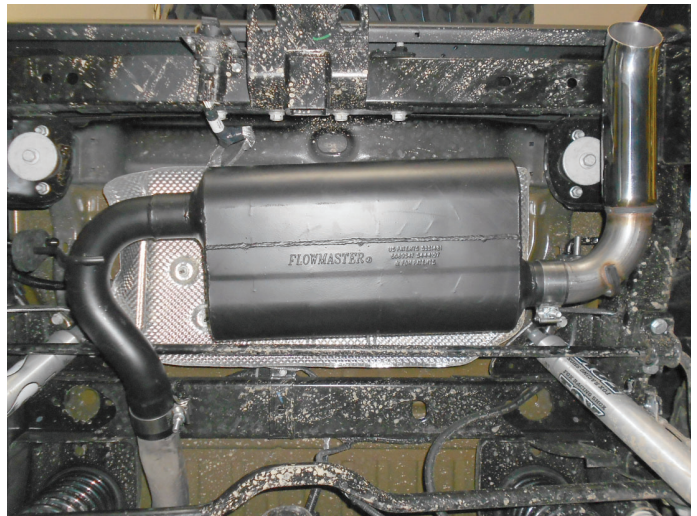
5. Place **clamp (3)** onto **muffler (1)** then connect it to factory outlet, lining inlet pipe notch with outlet tab. Insert wire hanger into isolator then tighten clamp enough to allow for adjustment without covering tab.



- Place **clamp (3)** onto muffler outlet then connect **tailpipe assembly (2)** to it. Insert wire hanger into rubber hanger then tighten clamp just enough to allow for later adjustment.



- Adjust exhaust components for fit; maintaining  $\frac{1}{2}$ " clearance and compensating for suspension, travel and vibration then tighten all clamps. Finally, fit **hanger keeper (4)** onto sideways hanger.
- Recommended: Secure slip-fit connections with a 1-inch tack weld then spray high-temp paint over each weld to prevent rust and premature corrosion.



Congratulations, the installation of your FLOWMASTER performance exhaust system is now complete!





# FORCE II

Installation Diagram  
**817437**  
2007-13 JEEP WRANGLER JK  
3.6L, 3.8L V6 ENGINE  
2 & 4 Wheel Drive

