

## DV8 Offroad TCJL-01

### 2018+ JL Tire Carrier Reinforcement Plate

(Recommend up to a 35" tire)

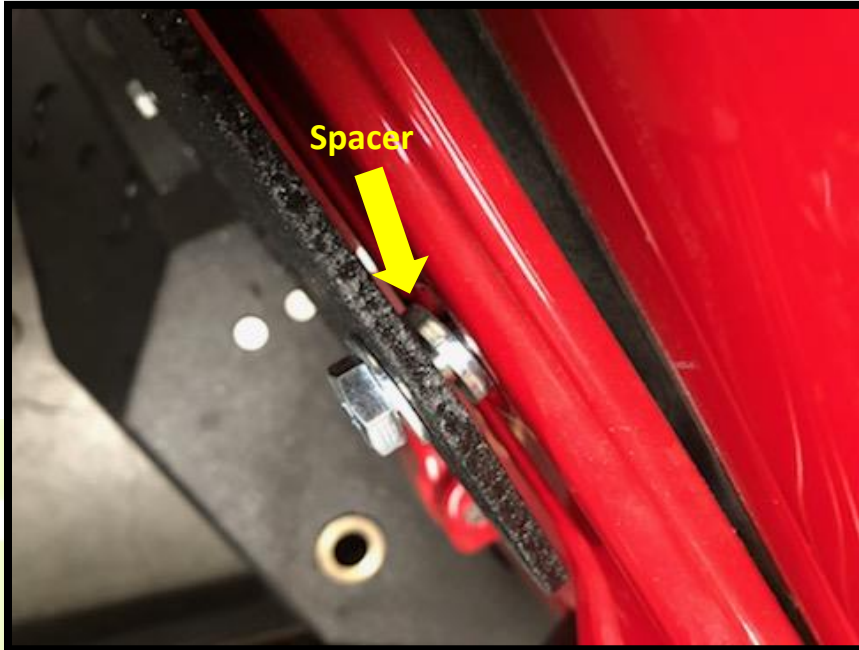
1. Begin by removing factory tire carrier assembly from JL.
  - a. Be sure to keep all factory components since you will utilize some from factory carrier.
2. Once factory carrier is removed, you will need to trim factory tailgate exhauster so that they are flush. You do not need to grind them flat. Only remove tabs.



3. Open your new TCJL-01 and inspect all items prior to installation.
4. With the rear door of the Jeep closed and latched, begin to remove the (4) four factory torx bolts.
  - a. As you remove them, the hinges will pull away from the door. Don't be alarmed, just be sure not to open or move the rear door.



5. Place DV8 tire carrier main enforcement plate up against the hinges. **NOTE:** (This step is better with assistance to prevent any damage to your paint)
- Place one of the provided (12) twelve spacers between the plate and the hinge, and then one M10x1.5 60 bolt and washer in hole. Screw in bolt, but leave loose until all (12) twelve carrier bolts are attached.
  - Continue to other (3) three remaining bolts.



6. Once all (4) four bolts are in place, use factory hardware and remaining (8) eight spacer for bolts around tailgate exhauster vents.



7. Tighten down hardware until secure.
8. Remove the factory third brake light from original tire carrier by removing the (4) screws.
  - a. Replace this onto new DV8 tire carrier.



9. If you are running a rear camera you will utilize the factory camera bracket (plastic) and the provided camera enclosure. If you do not have a camera, you will utilize the block off plate.



10. If using camera, bolt the camera enclosure to the carrier bracket using the (3) three provided allen head screws.



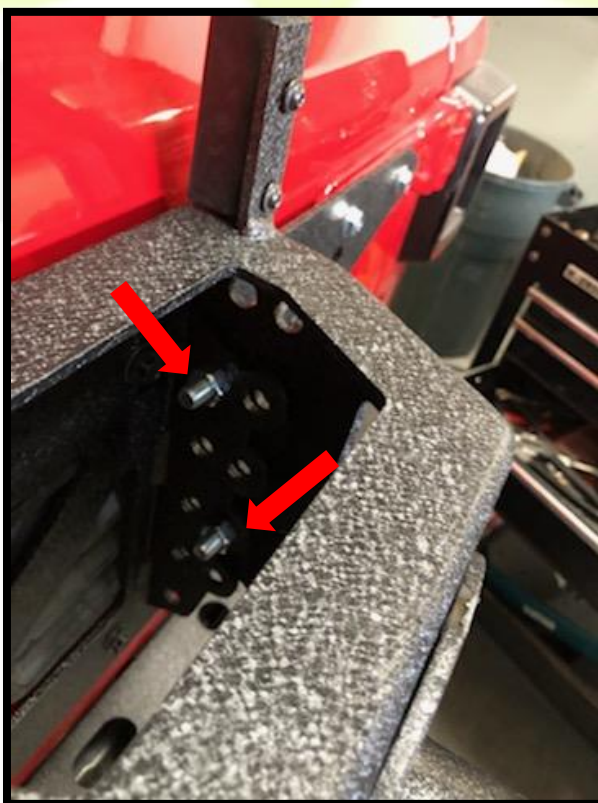
11. Place camera and camera mount inside the camera enclosure on the DV8 carrier making sure to align the 3 large holes. Utilizing the stamped stud plate from the factory tire carrier, place stud plate behind the camera mount aligning the stud through the holes.



12. Place entire assembly on spare tire and attach using stock lug nuts. Take entire assembly and tire, and hold it up to carrier. Since there is many holes for adjustment, find what ones best fit your tire size.
- Mark which (4) four holes will be used on carrier. Note: This is much easier with assistance.



13. On each side of the carrier, place one bolt at the highest point on one row of holes, and one at the lowest point of connection with the tailgate plate and tire mount on the other row.



14. Tighten down (4) four tire mount bolts. Ensure all hardware is secure. Plug in camera and third bracket light. Attach tire and test door.

